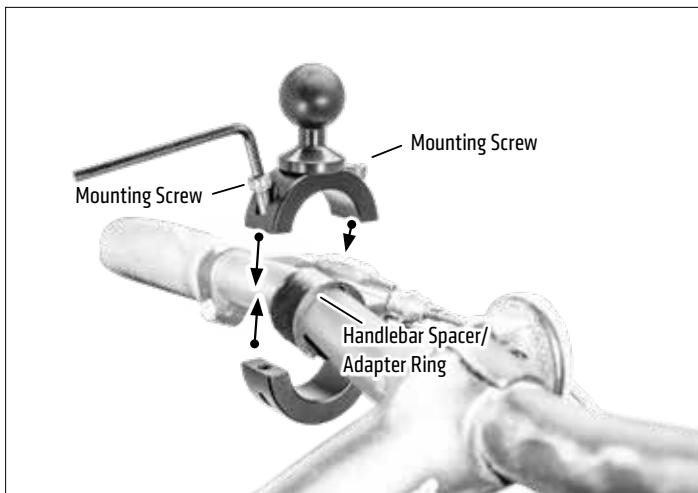


Package Contents:

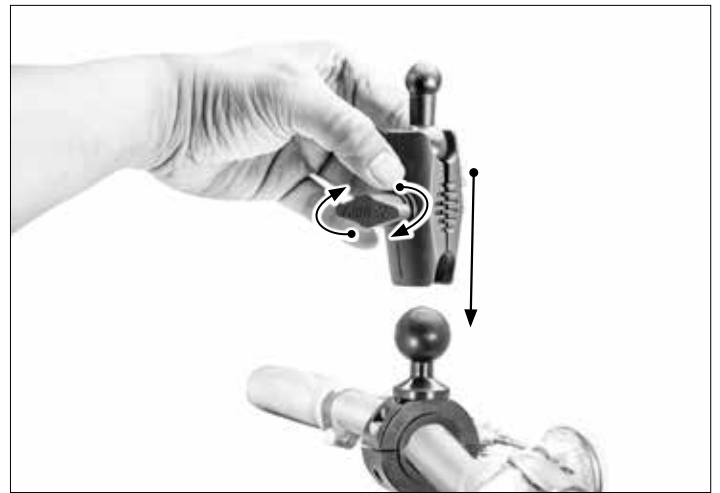
- (1) MC25MMB – Motorcycle Handlebar Mount Pedestal
- (1) SP-RMS250 – Small Robust Mount Shaft
- (1) SP25MM17 – 25mm Ball to 17mm Ball Adapter

This Motorcycle Mount fits cylindrical handlebars up to 30mm diameter and comes with 3 handlebar spacer/adapter rings of different widths. Select the appropriate size for optimum mounting to your handlebar.

- 1 Place handlebar spacer/adapter ring around handlebar. Attach mount to handlebar around spacer. Use the included hex key to securely tighten both mounting screws.



- 2 Attach Robust Mount Shaft by unscrewing knob to loosen collar. Adjust angle then retighten knob to secure.



- 3 Attach Garmin nuvi (not included) by inserting the mount's 17mm ball into the device's mount base.



⚠ Safety Precautions

Arkon is not responsible for any damages caused to your vehicle, your device, or yourself due to the installation or use of this mount.

ARKON MOUNTS

Consumer Hotline:

USA (800) 841-0884

INT'L (626) 254-9005

Monday - Friday 9am - 5pm, PST

www.arkon.com

Arcadia, CA 91006 USA

Designed in USA | Made in USA

© Copyright 2018 Arkon Resources, Inc.