



CM078WD-SBH
Multi-Surface Sticky
Suction Mount with
Adhesive Mounting Disk

Package Contents:

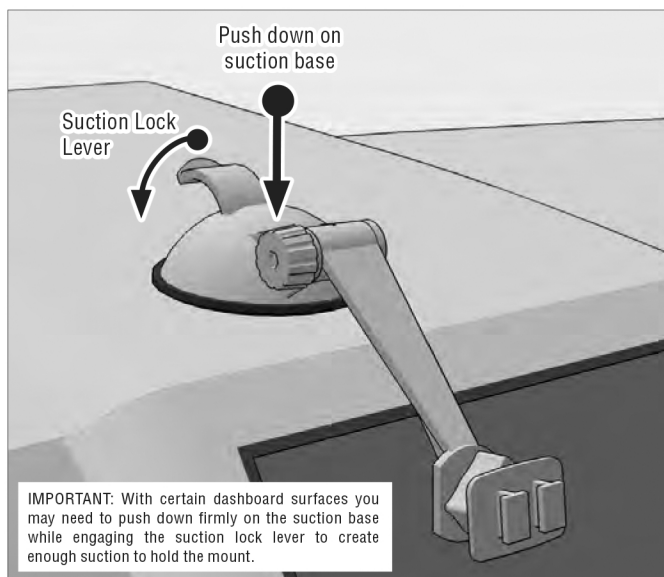
CM078-SBH - Multi-Surface Sticky Suction Pedestal
AP020 - Console or Dashboard Adhesive Mounting Disk

DASHBOARD MOUNTING WARNING: The sticky suction pedestal **SHOULD NOT** be used on some types of dashboards. It may leave a **PERMANENT** indentation on dashboard surfaces made of soft vinyl, leather, or similar materials. To prevent permanent indentation marks, use the included adhesive mounting disk when mounting on soft dashboard surfaces.

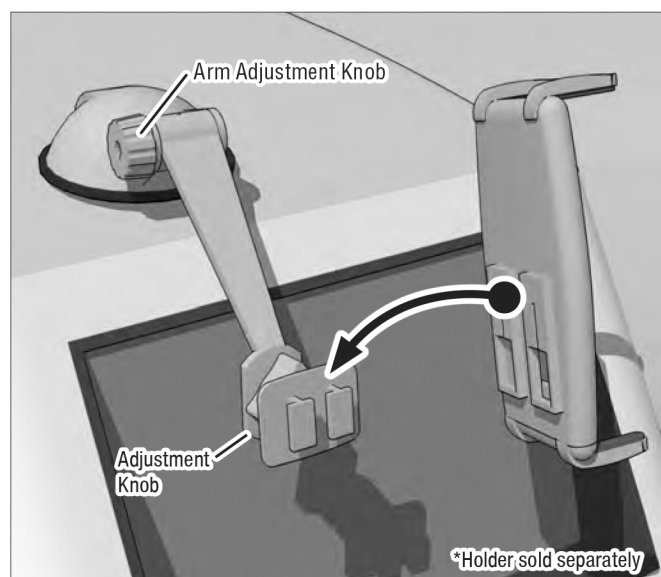
IMPORTANT: Some dashboards with heavily textured or porous surfaces may require you to push down on the suction base while engaging the suction lock lever to achieve the suction required to hold the mount in place.

Do not place mount in or near an airbag deployment zone or where it will obstruct view of the road.

- 1** Attach Mount to dash or windshield and engage Suction Lock Lever. With certain dashboard surfaces you may have to push down on the suction base firmly to make the mold hold to the dash surface.



- 2** Attach any Arkon 2T holder* to the mount. Adjust mount if necessary.



- 3** Use adhesive mounting disk* for mounting on soft dashboards.

