

Included Components:

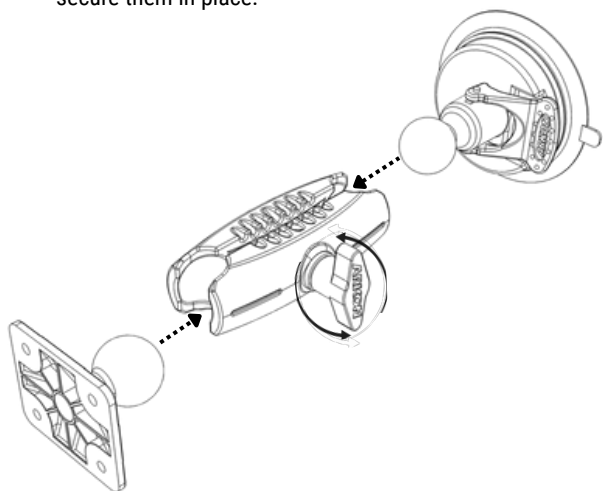
- A. 1x 25mm ball to 4-hole AMPS adapter (APAMPS25MM)
- B. 1x Robust™ Series 3.75 inch shaft (SP-RM250)
- C. 1x 25mm ball to 85mm suction base (SPRM081B)

Important: Clean the application surface and make sure it is free of dirt, dust, and grease before installation.

Note: Hardware is not included.

1 Assemble the components

Loosen the shaft arm by turning it counterclockwise. Insert the 25 mm ball ends of the adapter and base into each side of the shaft, then turn the shaft clockwise to tighten and secure them in place.



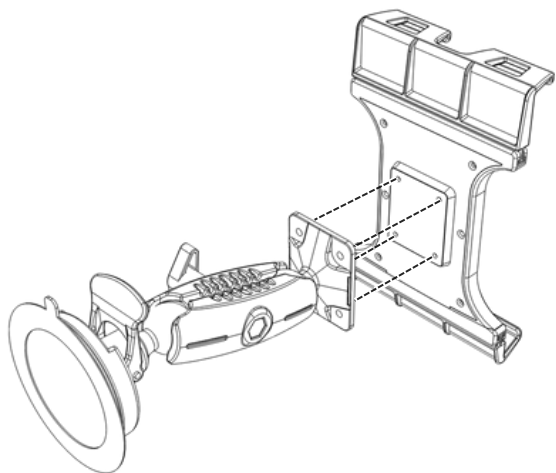
2 Install the Suction Base on the Windshield

Select a flat, secure area on the windshield. Clean the surface with the included alcohol pad and allow it to dry. Remove the protective film from the suction base, press it firmly onto the glass, and flip the lever down to lock it in place.



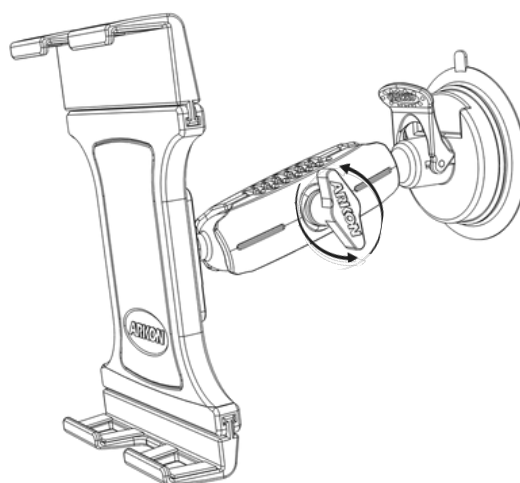
3 Installing a Device onto the adapter

To install, simply connect the AMPS adapter to a compatible AMPS device. Please keep in mind that screws are not included.



4 Adjusting the shaft arm

To reposition the ball adapters, loosen the shaft arm knob by turning it counter-clockwise. After adjusting, tighten the knob by turning it clockwise.



WARNING

CHOKING HAZARD - Keep out of reach from children under 8 yrs. as they can choke or suffocate on parts included with this system

WARNING

Arkon® is not responsible for any damages caused to your device or yourself due to the installation or use of this mount. Do not install Arkon® products near areas that interfere with operation of vehicles. Arkon® assumes no responsibility or liability for injury or death as a result of failure to install in a safe location. Arkon® is not responsible for any damages caused to vehicles, product, or people due to the installation or use of this product.

