

Included Components:

- A. 1x 4-Hole AMPS to 25mm Ball Adapter (APMAMPS25MM)**
- B. 1x Robust™ Series 3.75 inch Shaft Arm (SP-RM250)**
- C. 1x 18" Seat Rail Mount - 25mm compatible (RMH08825MM)**

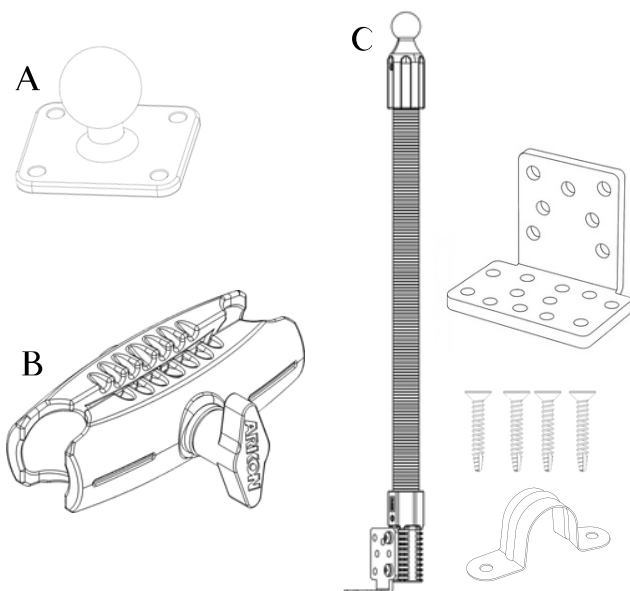
Hardware Specifications

4x 18-8 Stainless Steel, M4.2 Screw Size 25mm Long

Important: Clean the application surface and make sure it is free of dirt, dust, and grease before installation.

If you need a replacement part, please refer to the **SKU** options below:

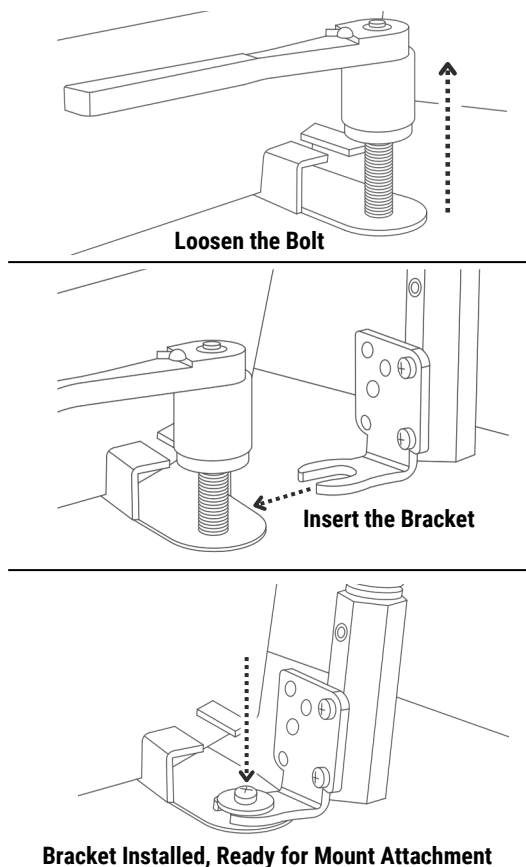
- **Metal Conduit:** SPCONDUIT
- **Floor Bracket:** SPSRBRACKET



Based on your preferred base, please follow the steps outlined below.

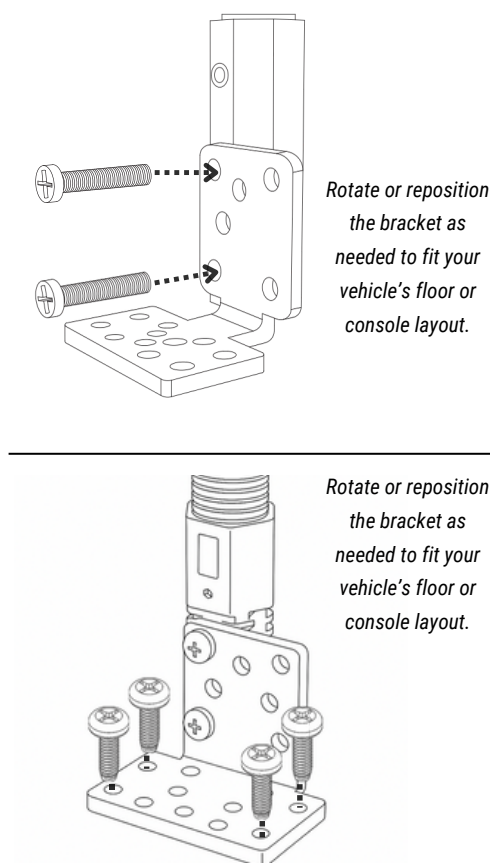
1 Option 1 - Mounting the Passenger Seat Bolt

Loosen the passenger seat track bolt with a socket wrench, insert the bolt bracket, then tighten the bolt securely.



1 Option 2 - Floor Mounting

Remove the bracket. Next, align and fasten the floor mounting bracket to the base of the mount.



WARNING

CHOKING HAZARD - Keep out of reach from children under 8 yrs. as they can choke or suffocate on parts included with this system

WARNING

Arkon® is not responsible for any damages caused to your device or yourself due to the installation or use of this mount. Do not install Arkon® products near areas that interfere with operation of vehicles. Arkon® assumes no responsibility or liability for injury or death as a result of failure to install in a safe location. Arkon® is not responsible for any damages caused to vehicles, product, or people due to the installation or use of this product.

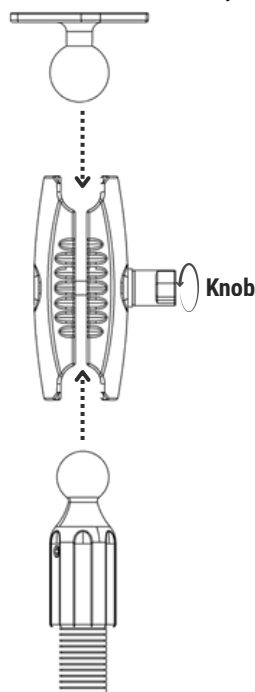
Continued on page 2



2

Assemble the Components

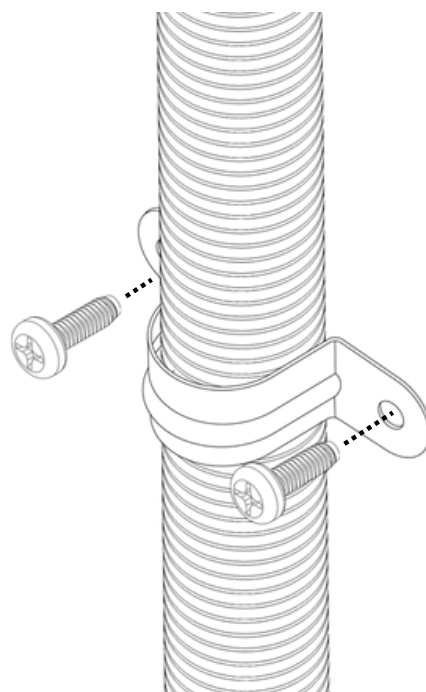
Turn the shaft knob counterclockwise to loosen it. Next, attach the 25mm ball adapters to both ends. Finally, tighten the shaft to secure everything in place.



3

Optional Step: Install Metal Conduit

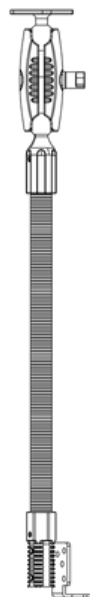
Attach the included metal conduit to the console to help reduce vibration and enhance stability.



4

Final Assembly Overview

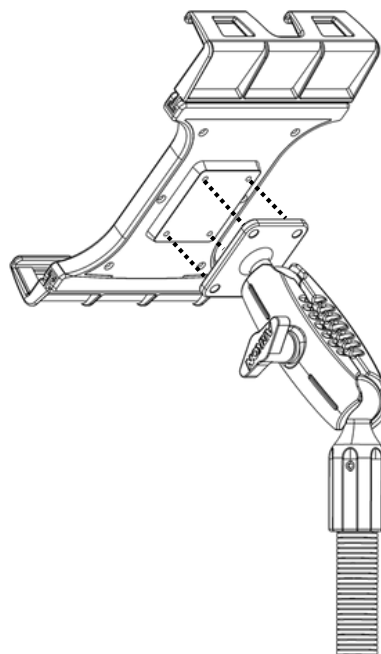
Refer to the image below to view the complete, fully assembled setup. Ensure all components are secure and properly aligned.



5

Install a AMPS-Compatible Holder

Attach the adapter to a AMPS-compatible holder.



WARNING

CHOKING HAZARD - Keep out of reach from children under 8 yrs. as they can choke or suffocate on parts included with this system

WARNING

Arkon® is not responsible for any damages caused to your device or yourself due to the installation or use of this mount. Do not install Arkon® products near areas that interfere with operation of vehicles. Arkon® assumes no responsibility or liability for injury or death as a result of failure to install in a safe location. Arkon® is not responsible for any damages caused to vehicles, product, or people due to the installation or use of this product.

