

Includes:

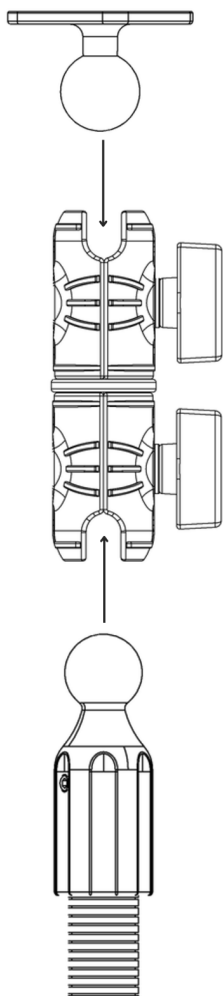
- 1 - Metal 4-Hole AMPS to 25mm Ball Adapter (APMAMPS25MM)
- 1 - OCTO™ Series 4.25 inch Double Socket Shaft Arm (SPRMSWA)
- 1 - 18" Seat Rail Pedestal with Hardware Kit (RM08825MM)

Seat Rail Kit Hardware Specifications:

- 1 - Metal conduit (SPCONDUIT)
- 1 - Floor mounting bracket
- 4 - Phillips rounded heads screws (18-8 Stainless Steel, M4.2 Screw Size 25mm Long)

1 Assemble the Components

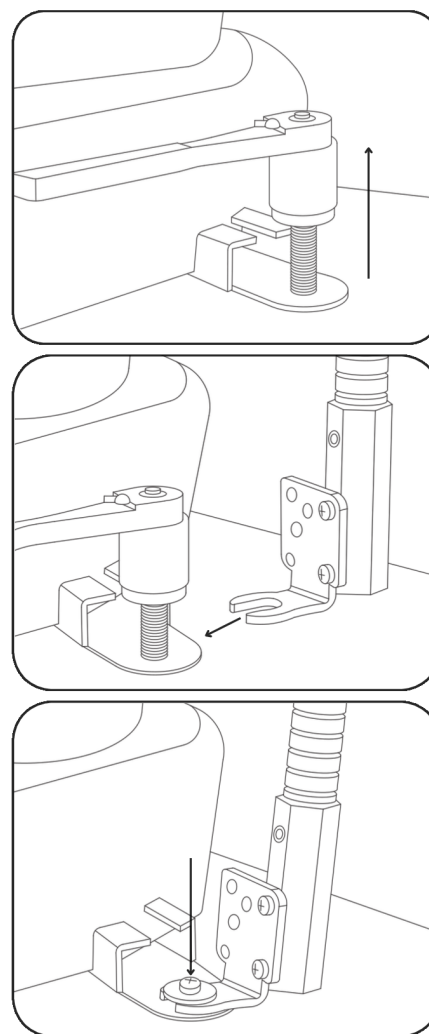
Begin by turning both shaft knobs counterclockwise to loosen them. Next, insert the 25mm ball from the AMPS adapter into one side of the shaft arm, and attach the 25mm ball from the seat rail mount to the opposite side of the shaft arm. Finally, tighten the knobs to ensure everything is securely in position.



2

Option 1 - Mounting the Passenger Seat Bolt

Utilize a socket wrench to loosen the bolt on the passenger seat track. Then, insert the seat track bolt bracket. Finally, tighten the seat track bolt securely.



WARNING

CHOKING HAZARD - Keep out of reach from children under 8 yrs. as they can choke or suffocate on parts included with this system

WARNING

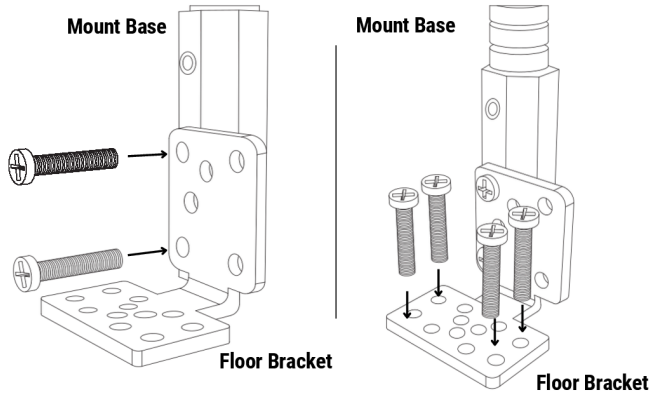
Ark® is not responsible for any damages caused to your device or yourself due to the installation or use of this mount. Do not install Ark® products near areas that interfere with operation of vehicles. Ark® assumes no responsibility or liability for injury or death as a result of failure to install in a safe location. Ark® is not responsible for any damages caused to vehicles, product, or people due to the installation or use of this product.

Continued on page 2



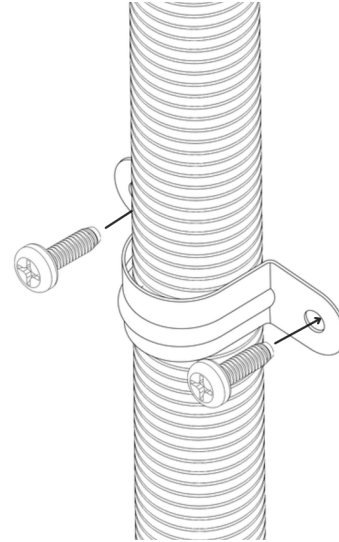
3 Option 2 - Floor Mounting

Fasten the floor bracket to the mount. (Adjust the bracket's orientation as needed for your vehicle). Secure the floor/console bracket in place using screws.



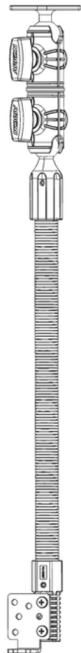
4 Optional Step: Metal Conduit

Connect the provided metal conduit to the console to reduce vibration.



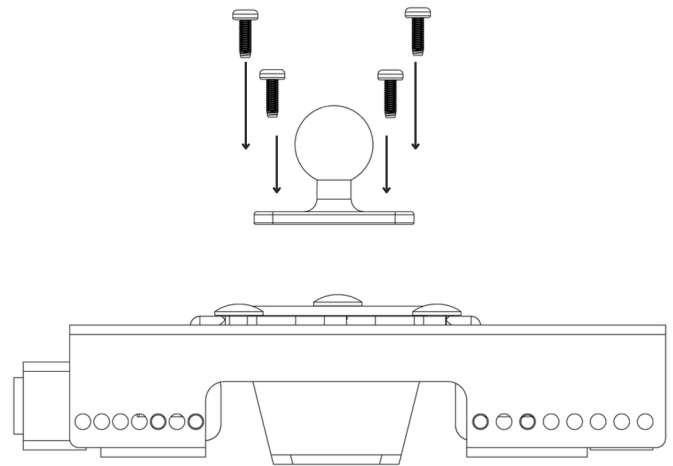
5 Fully Assembled

Refer to the image below for the full assembled product.



6 Install a AMPS holder that is compatible

Connect a 4-Hole AMPS compatible holder (sold separately) to the AMPS adapter to establish a full mount system.



WARNING

CHOKING HAZARD - Keep out of reach from children under 8 yrs. as they can choke or suffocate on parts included with this system

WARNING

Arkon® is not responsible for any damages caused to your device or yourself due to the installation or use of this mount. Do not install Arkon® products near areas that interfere with operation of vehicles. Arkon® assumes no responsibility or liability for injury or death as a result of failure to install in a safe location. Arkon® is not responsible for any damages caused to vehicles, product, or people due to the installation or use of this product.

