

Includes:

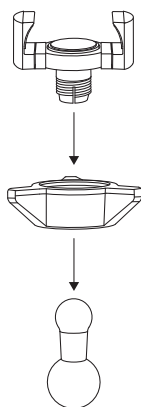
- 1 – Manual
- 1 – RoadVise Phone Holder (RV001WR)
- 1 – 25mm to 17mm Ball Adapter (SP25MM17)
- 1 – 17mm Tightening Ring (SP-SB-RING)
- 1 – 25mm AMPs 4-Hole Adapter Ball Mount (APMAMPS25MM)
- 1 – Ratchet Swivel Shaft Arm (SPRMSRA)

Note: Screws are not included

Important: Clean the application surface and make sure it is free of dirt, dust, and grease before installing the mounting hardware.

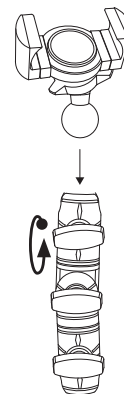
1 Installing the 25mm to 17mm ball adapter to the RoadVise phone holder

Locate the packaging containing the ball adapter and phone holder with a tightening ring. Place the tightening ring over the 17mm side of the ball adapter. Push in the 17mm ball to the back of the phone holder. Turn the tightening ring clockwise to tighten the position of the ball adapter.



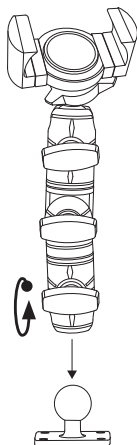
2 Install the ratchet swivel shaft to the RoadVise phone holder with 25mm adapter

Locate the package that holds the ratchet swivel shaft. Once you have it, locate the end of the swivel shaft and turn the knob counterclockwise to loosen the space. This will allow you to insert the 25mm side of the ball adapter mount. Once it's in place, turn the knob clockwise to tighten the position of the ball adapter.



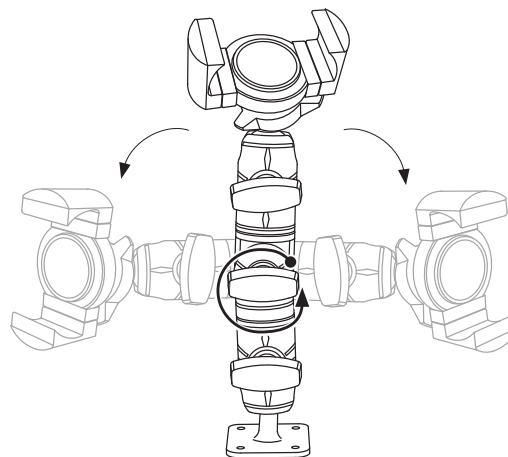
3 Install the AMPs 4-Hole adapter ball mount to the ratchet swivel shaft

To attach the AMPs 4-hole adapter ball mount, first find the package containing it. Then, on the end of the swivel shaft that is opposite from the phone holder, turn the bottom knob counterclockwise to create space for the adapter. Insert the 25mm ball adapter and turn the knob clockwise to secure it in place.



4 Optional - Adjust the center knob to reposition the mount

Turn the center knob counterclockwise to move the arm left or right. Once locating the preferred angled, turn the knob clockwise to tighten the position.



WARNING

CHOKING HAZARD - Keep out of reach from children under 8 yrs. as they can choke or suffocate on parts included with this system

WARNING

Arkon® is not responsible for any damages caused to your device or yourself due to the installation or use of this mount. Do not install Arkon® products near areas that interfere with operation of vehicles. Arkon® assumes no responsibility or liability for injury or death as a result of failure to install in a safe location. Arkon® is not responsible for any damages caused to vehicles, product, or people due to the installation or use of this product.

